



FORT HILL

PERFORMING ARTS CENTER

20 Fort Hill Avenue, Canandaigua, New York 14424

Technical Information

Stage Operations

Venue Specifications

Services and Policies

Production Contact

Facilities Manager- Gordon J. Estey
gestey@rochester.rr.com 585-752-3494

Stage Manager- Tyler J. Struble
stagemanager@fhpac.org

Website: www.fhpac.org



Table of Contents

General Facility Information	3
Policies- Loading Dock, Parking, Carpentry, Rigging, Softgoods	4
Technical Specifications Continued- Line Plot	5
Technical Specifications Continued- Sound, Lighting	6
Technical Specifications Continued-Lighting Inventory/Accessories	7
Technical Support- Inventory, Music and Dance Performance, Catering	8
Support Spaces	9
Plans Appendix A	
Floor Plans-Lower Level, Main First Floor, Mezzanine Second Floor	
Theatre Seating-Orchestra Level, Mezzanine Level	
Site Plan- Parking, Special Needs Access, Loading Dock	
Light Plot-Positions, Fixtures, Accessories (for illustrative purposes only, plot is updated regularly)	17-19
Venue Photos	20-21

NOTICE: This packet has been prepared using available information and is subject to change. All information contained is supplied solely to provide a general idea of the facility and services available. FHPAC takes no responsibility for accuracy. All critical measurements should be verified on site.

***Fort Hill Performing Arts Center, Inc. is the premier
mid-size venue for Rochester and the
Finger Lakes Region for music, dance, theatre
and family entertainment.***

Lower Level contains the;

- North parking lot patron and special needs entrance,
- Stairs to the main floor Lobby
- Elevator serving all three floors of the fully accessible facility.
- **Ruth Terwilliger Performing Arts Gallery**
- **Sheridan Family Lounge** and accessible restrooms
- **Stave Family Greenroom**

First Floor contains the;

- Fort Hill Avenue main entrance
- **Hamlin Family Main Lobby and Sahler Family Donor Wall**
- Box office, administrative office and theatre entrances
- **Ontario County Arts Council Gallery** has a concessions stand and space for catered events, art shows, conferences and many other uses
- **Sands Family Foundation Theatre** orchestra level seating and the **Estey Family Stage**
- The Stage Door and Loading Dock

Second Floor contains the;

- **Conifer Realty Mezzanine** with box seating
- **Kesel Family Projection Booth**

See Appendix A for theatre floor plans, seating plan and site plan

Address: Fort Hill Performing Arts Center, Inc.
20 Fort Hill Avenue
Canandaigua, New York 14424
www.fhpac.org (585) 412-6043

Fort Hill Performing Arts Center, Inc. is a New York State 501(c)(3) Non-Profit Corporation and owns the performing arts center.

Technical Specifications & Inventory

Stage Door, Loading Dock, Parking Information

The stage door and loading dock is located at the West end of the building. Trucks may back up to the loading dock on a diagonal, we have an 8' ramp for access. The stage manager and FHPAC personnel are not responsible for loading. FHPAC can arrange for loaders, an extra charge will apply.

There are maximum dimensions allowable and limitations to our loading area. The loading dock stage door is 32" wide x 6'8" high. Note: Do not build anything for use in the theatre with-out prior conversation with the facility or stage manager regarding load-in to the theatre. One empty truck can be parked at the dock. 26' maximum size. All others must be moved to the main parking lot following load-in.

Stage Floor

Scenery can be attached to the stage floor with approval of the stage operations manager. Renter is responsible to repair damage to the floor following use. The stage floor may be scenically painted for a production but must be returned to its black finish following use. FHPAC will provide paint and supplies to re-paint the floor black, additional charges will apply. Any paint damage to the facility must be corrected following use and will be an expense to the Renter. Paint brushes and supplies may not be rinsed or cleaned on the premises. They must be removed or disposed of properly.

FHPAC has a Harlequin Cascade black dance floor (marley). Only approved gaffers spike tape may be used on the marley. The use of scenery and rosin on the marley must be approved in advance by the stage manager. Rosin boxes and walk-off carpets must be used to keep the rosin from tracking throughout the facility. Rosin boxes and supplies for the cleaning of the dance floor are available from FHPAC. The renter is responsible to clean up or repair any damage to the facility by the use of Rosin.

Stage Carpentry Information

Proscenium opening: 33' 11" wide, 1' 6" deep, 18' 0" high in center of curve

Full stage depth from DS edge of apron to US wall: 30' 6"

Plaster line to US wall: 22' 0"

Apron dimensions: 6' 6" deep x 53' at widest point

Fly loft from grid to stage deck: 28' 9" (maximum trim 28' 0")

Stage floor is tempered masonite painted black over two layers of soft white pine

Stage house from SL wall to SR wall: 53' 11"

Proscenium SR edge to edge of fly floor 6' 0"

SR wing: 10' 0"

SL wing: 7' 0" (See floor plan for obstructions and layout)

SR clear stage floor to underside of fly floor: 12' 3"

No overhead obstructions on SL

SL Wall to black tab masking 46"

Stage height from house floor: 32"

DS center stage lift: 5' 10" deep X 12' 0" wide. 2,000 lb. limit. The lift can travel from stage to house floor, or to lower basement level. Lift cannot be used as a personnel lift. At house level, stairs can be inserted for stair access to the stage.

House

From last row Orchestra section by mix to curtain line 51', Mix position to stage apron 42', to US CYC 71'

From Mezzanine center box lower level to curtain line 48'

From Mezzanine upper level step to curtain line 56'

From Mezzanine lighting rail to proscenium 40' 6"

From Mezzanine lighting rail to apron edge 34' 6"

From Mezzanine lighting rail to US wall 63'

Throw from projection booth to proscenium wall 70' 10"

Stage Maximum Occupancy is 106

Stage Access

The Kenyon Family crossover hallway and signature wall is located on the West end of the stagehouse providing an US crossover accessed from UL & UR. The hallway is 8' 6" wide and contains a special needs lift for access to the stage from the house level as well as stairs to the North tunnel and lower level. On the SR side of the hallway is a unisex restroom, a custodial sink, and a drinking fountain. To sign the signature wall, permission must be obtained from the stage manager.

Stage Rigging

The stage is equipped with a manual pinrail, and manual winches. A fly floor is located 14' above the stage deck on SR with a double pinrail. All rope linesets and hand winches contain four lift lines. Electric trusses are dead hung at 16' trim. The counterweighting and flying of curtains and scenery must be approved in advance by the stage manager. The ability to fly scenery is limited as to weight. Sand bags and clews are available, extra charges will apply for union riggers and fly crew. Stage rigging can only be operated by house and union hands. No Exceptions.

- The main valance is purple velour with gold rope and tassels and is **not removable**, it may be flown out of sight.
- The Main Rag (house/act) curtain is pleated purple velour and is a counterweighted guillotine, has a center overlap for paging.
- The single purchase line-set is located DL. The curtain is not removable.
- There are four dead-hung lighting trusses 18" deep x 40' wide, 750 lb. max load. **(The rep plot cannot be altered. It is possible specials may be added upon approval from the house LD, additional charges will apply.**
- Black masking borders are located on three manual winches. 100 lb. max load.
- The pinrail has 15 rope linesets

House Softgoods Inventory

- 1- Main Valance 8' H X 38' W
- 1- Main House Curtain 14' H X 40' W two panels
- 6- Black Legs 18' H X 10' W flat panel no fullness
- 3- Black Borders 10' H X 40' W flat panel no fullness
- 1- Full Black Drop 14' H X 40' W with fullness
- 1- White bleached muslin CYC 18' H X 40' W
- 1- Black Sharkstooth Scrim 22' H X 40' W
- 1- Black Sharkstooth Scrim 14' H X 40' W
- 1- White Muslin Screen 14' H X 16' W
- Assorted gold, red, and blue rain curtain drops and gold rain curtain leg

Line Set Specifications and House Rep Line Plot

Num	Location	Purpose	Travel	Max lbs	Type
1	0' 6"	Grand Valence	28'0"	90	Rope Set (Not Removable)
2	1' 6"	Main Act Curtain	28'0"	250	Gilloutine (Not Removable)
3	3' 0"	First Stage Electric	Deadhung	750	18" X 40' Truss
4	4' 6"	1A Stage Electric	28'0"	150	2 Line Rope Set
5	5' 0"	First Black Legs	28'0"	110	Split Rope Set
6	6' 0"	First Black Border	22'0"	100	Hand Winch
7	7' 0"	Mid Stage Black Drop	28'0"	150	Rope Set (Rep Plot)
8	7' 6"	Spare	28'0"	150	Rope Set
9	9' 0"	Second Stage Electric	Deadhung	750	18" X 40' Truss
10	10' 0"	Spare	28'0"	150	Rope Set
11	10' 6"	Spare	28'0"	150	Rope Set
12	11' 0"	Second Black Legs	28'0"	110	Split Rope Set
13	12' 0"	Second Black Border	22'0"	100	Hand Winch
14	13' 6"	Spare	28'0"	150	Rope Set
15	14' 0"	Spare	28'0"	150	Rope Set
16	15' 0"	Third Stage Electric	Deadhung	750	18" X 40' Truss
17	16' 0"	Spare	28'0"	150	2 Line Rope Set
18	16' 6"	Spare	28'0"	150	Rope Set
19	17' 0"	Third Black Legs	28'0"	150	Split Rope Set
20	18' 0"	Third Black Border	22'0"	100	Hand Winch
21	19' 6"	Fourth Stage Electric	Deadhung	750	18" X 40' Truss
22	20' 6"	Spare	28'0"	150	Rope Set
23	21' 0"	Spare	28'0"	150	Rope Set
24	21' 6"	White Scrim Drop w/Fullness	28'0"	150	Rope Set (Rep Plot)
		All softgoods are movable except as noted, but must be restored			

Sound System

The Main mixing console is located at the rear FOH in the center mix position with provisions for hook up of audio playback/recording. The system consists of powered speaker arrays each side of the proscenium, a stage monitor system, Wireless lavaliers and hand-held mics, stands, cables, and accessories.

Production Intercom & Paging

8 Hardwired production intercom stations for belt packs and headsets are located backstage 1-left and 1-right, 1-FOH SM, 2-FOH mix position and 3-FOH followspot booth. A paging system to the lower level dressing rooms for show and cast calls console is located SR. Live or electronic show feeds can be sent to lower level dressing room monitors. A hearing impaired system is installed in the theatre.

House Sound Inventory and Specifications

2 Powered speaker arrays hung above on the left & right of the proscenium with 3 RCF HDL 10-A-W speakers and 1 RCF HDL subwoofer
1 Midas M 32 House Console located at FOH mix position
1 DL 32/16 Digital Stage Box located SR with AES-50 CAT5e shielded cable to FOH console
1 QSC GX-5 House Monitor Amp 2 channels for fills
4 Vue i 2X4 5T dual 4.5" Apron Fill Speakers-for voice presentation fill, low profile
3 JBL 12" JRX 112M Fill Speakers- for concert fill
8 Shure SM-58 Microphone
6 Shure SM-57 Microphone
Shure Wireless 4 PGX4 Handheld, 3 Shure WL 185 Lavalier Elements
1 Shure Wireless SLX4 Handheld 4 Sennheiser E614 Condenser Microphones
1 Sennheiser E602 II Kick Drum Microphone
1 Shure MX418C Lectern Microphone
14 Boom Tripod Mic Stands
4 Straight Round Base Mic Stands
4 Table Top Mic Stands
6 Short Boom Tripod Mic Stands
8 DB-1 Direct Box
25-10', 37-25', 5-50' XLR Mic Cables
20 Assorted Audio Adapters, Adapter Cables and 1/4" patch
1 100' 16 X 4 Whirlwind Snake all connectors XLR
1 50' 16 X 4 Snake, 16 XLR in, 4 1/4" out
4 12" Yamaha DBR12 Powered Monitors
2 10" Yamaha DBR10 Powered Monitors
8 Pro Intercom BP-1 Belt back single channel, 8 CC-100 Single muff headsets
Williams FM-457-12-Net-D-Pro Hearing Assistance System, Direct house mic not through console

Lighting Specifications

The lighting and dimming system consists of a ETC Paradigm entry and panic system. House lighting is provided by 6 large LED ceiling chandeliers, 5 small LED chandeliers located under the Mezzanine and LED wall sconces on all levels. All fixtures are fully dimmable from 0-100% with no drop off. The house lights are also interfaced to the stage lighting console located at the FOH mix-position. The lighting console is located at the FOH mix. Tivoli aisle runway, and mezzanine box perimeter lights for patron safety are operated from Paradigm at the mix and are on during any use of the house and mezzanine. They cannot be disabled during a black-out. They are operated at 30% and do not read during a black-out.

DMX data ports are located on all levels through-out the facility at all lighting positions and booths. The house plot utilizes 2 universes for DMX data. Elation data splitters are located SR.

House dimming includes the following:

House lights 8 2.4K Sensor dimmers, hard wired.
FOH Ports 8 2.4K ETC Sensor dimmers (Rep focus cannot be changed)
FOH Box Booms and Mezzanine Rail 24 2.4 ETC L-86 Dimmers. Lens tubes may be changed upon approval of the house LD.
Stage 48 2.4K ETC Sensor dimmers (located stage deck SR)
Stage 24 2.4K ETC Sensor dimmers for specials and stage booms (located on fly floor SR)
(stage circuiting may not be changed, limited ability to swap out fixtures other than tubes)

Lighting Inventory by Position- House Rep Plot (subject to change) See rep plots enclosed

FOH Box Boom SL	8 Source four 26 degree leko 575
FOH Box Boom SR	8 Source four 26 degree leko 575
36' Mezzanine Rail	6 Source Four 36 degree leko 575 Permanent warmers 6 Source Four 26 degree leko 575 5 Source Four 19 degree leko
FOH Ceiling Ports	10 Source Four 26 degree leko 575 (Note:Port cannot be changed or re-focused) 2 Source Four 19 degree leko 575
Mezzanine Booth Rail	4 ETC Color Source LED 19 degree leko
Stage Electric 1	7 Par 64 Can WFL 1K 4 Source Four 36 degree leko 575 1 Source Four 50 degree leko 6 Chauvet COLORado 1 Tri-Tour LED
Stage Electric 2	7 Par 64 Can WFL 1K 4 Source Four 36 degree leko 575 1 Source Four 50 degree leko 6 Chauvet COLORado 1 Tri-Tour LED 4 Altman 8" fresnels
Stage Electric 3	7 Par 64 Can WFL 1K 4 Source Four 36 degree leko 575 6 Chauvet COLORado 1 Tri-Tour LED 4 Altman 8" fresnels
Stage Electric 4	4 Source Four 36 degree leko 575 11 Chauvet COLORado 1 Tri-Tour

House Lighting Inventory (Includes Rep plot fixtures)

(Note: Fixtures are not additional and are used in the house rep plot).

2	ETC Element Lighting Console 1-60/500, 1-40/250
50	36 degree Source Four lekos 575
54	26 degree Source Four lekos 575
24	19 degree lens tubes
5	10 degree lens tubes
8	50 degree lens tubes
4	5 degree lens tubes
6	360Q 6 X 9 lekos
54	Par 64 cans WFL 1K Black steel
26	Par 64 cans WFL 1K Aluminium
2	Par 56 cans
32	Chauvet COLORados 1 Tri-Tour LED
16	ADJ 24" Megabars. 8-RGB, 8-RGBA
13	R-40 Floods 150
8	Altman 8" Fresnels 1K
8	6" Fresnels 500W
2	Elation 5R moving head fixtures
4	Altman 6" three circuit strip lights R-40 300W

Accessories subject to availability and approval of house LD (extra charges may apply)

(Note: Accessories and cable are not additional and may be used in the house rep plot).

3	Elation 4 circuit 20 amp DMX dimmer packs
2	Rosco Film FX units
8	Assorted FX loops
3	Rosco single gobo rotators
3	Image pro projectors
2	Starburst rotating balls
1	14" Mirror ball
8	4 way 10" barn doors
24	7 X 7 top hats
24	6 X 6 top hats
30	Source Four gobo holders
14	Altman gobo holders
2	2' X 8' stage box towers
6	50 lb Boom bases
6	Black iron pipe for side booms
24	12" side arms
20	6 circuit Socapex multi-cables
12	Socapex stage pin straight run break-outs
7	Socapex stage pin break-ins
33	Two-fers
8	Three-fers
80	Stage pin cables assorted lengths
50	Stage pin to Edison adapters both genders
24	100' 5 pin data cables
40	Assorted 3 pin data cables
	Cheseboro Swivel and rigid pipe clamps
	Color frames, clamps and safety cables for all units
	Extensive gel inventory

Special Effects Accessories (Extra custodial charges apply and charge for confetti supplies and CO2 canisters)

2	LeMaitre confetti cannons
---	---------------------------

Note: Due to the apartment complex located in our building, no water based, oil or dry ice, fog and haze and atmospheric effects may be used. Any type of hot or cold pyrotechnics are prohibited.

Ladder or box truss cannot be use or suspended on stage or in the FOH. Use of box truss towers must be approved in advance.

Projection/Video Wall

FHPAC contracts with a vendor for a 6.5 X 11.5 Video Wall. The install includes the wall, all rigging, drive rack and computer interface. Video Wall hangs between line-set 13 & 14 22'6" from the edge of the stage apron. Video wall subject to availability.

Renters can supply their own laptop and content/media for hook-up. Extra charges will apply for the use of the video wall.

Conventional video projectors can only be located on the stage deck, they cannot be flown or suspended and cannot be located in the FOH. FHPAC cannot furnish video projectors.

Support Equipment Inventory

Musical Instruments

- 1 Steinway 9' concert grand piano (Extra charge applies for use and tuning)
- 1 Ivers & Pond 7.5' Grand Piano Resides in OCAC Gallery (Extra charge to place on stage and restore)
- 1 Roland Juno DS88 electronic keyboard, KC400 amplifier and stand
- 4 Yamaha Symphonic Timpani 23", 26", 29", Ludwig 32"
- 1 Yamaha 5 piece drum kit, 600 series hardware
- Assorted Zildjian Cymbals and 14" Hi-hat
- Gibraltar 9608 drum throne
- 1 Musser 4.3 Octave Marimba M300
- 1 Yamaha 3.5 Octave Xylophone Rosewood YX-500RC
- 1 Set orchestral chimes
- 1 Ludwig 40" bass drum and stand
- 1 snare drum and stand
- 1 Bass amplifier Acoustic B50c
- 1 Crate Guitar amplifier 10" GX-80

Music Accessories

- 1 Conductor's podium
- 1 Conductors stand
- 100 Wenger black performance chairs
- 70 Manhasset music stands
- 60 Aria LED music stand lights with DMX control
- 5 Sections 4 step Wenger Choral risers with rear railing
- 2 Padded adjustable single piano benches 1-Jansen Artist

Dance Accessories

- 1 Harlequin Cascade black marley cut to stage floor and apron
- 6 Rosco Porta-Barre for warm-up & class
- 6 Rolling Z-racks for wardrobe

Miscellaneous Accessories

- Stanchions for crowd control
- Drape and pole system with black or white drapes
- 4-4 X 8 X 16" stage risers
- 6-3 X 6 X 16" stage risers
- 4-3 X 6 X 8" stage risers
- Black riser skirting
- Orchestra railing with velour skirting
- Presentation Lectern with mic holder

Catering Equipment

- 10-8' banquet tables
- 10-6' banquet tables
- 6-60" round tables
- 10-32" round cabaret height tables
- 10-Oval serving trays
- 15-Round serving trays
- Assorted table linens and skirting

Support Spaces and Rooms

Lower Level

Steve Family Greenroom (dressing room)

32' X 24' 768 square foot multi-purpose room **Maximum Occupancy is 106.**

The room is divided using a drape and pole system for dressing rooms. The room has a counter with four sinks, mirrors and lights on the North side of the room. There is access to 2 unisex restrooms, one with shower, just off a small hall on the East side of the room. The room has a hospitality center- microwave, refrigerator, coffee maker. Electrical appliances cannot be brought in as per venue fire code and insurance liability.

Main Floor

Ontario County Arts Council Gallery/Concessions

The 70' X 18'- 1,260 square foot gallery can be utilized for a variety of functions not limited to: sit-down catered events, receptions, conferences, art shows, silent auction events. The area is divided into three sections. The outside sections measure @ 19' X 18', the center area measures 15' X 20'. **Maximum Occupancy is 160.**

The concessions stand located at the South end is permanent. The coffered ceiling with four chandeliers is surrounded with display track lighting, set up of the space is included in the use fee for the OCAC gallery.

As a Gallery Display Area – A paint rail surrounds the room and hangers can be used to attach to the walls on all sides of the room. The gallery is owned by FHPAC and curated by the Ontario County Arts Council. Requests for shows other than OCAC can be made through FHPAC. Extra charges may apply. All work displayed must be available for sale. Sales are made through the FHPAC box office and on our website. 15% of all sales is retained by FHPAC.

As a Conference Space- Theatre style or table seating can be furnished for your event. Many layout options are available. The theatre entrance ramps may not be blocked at any time.

For Catered Events- The space can be set up for a sit down or hand passed reception style event, such as private Birthday party's. Small wedding receptions or anniversary party's can be arranged with a head table located at either end of the room or in the center.

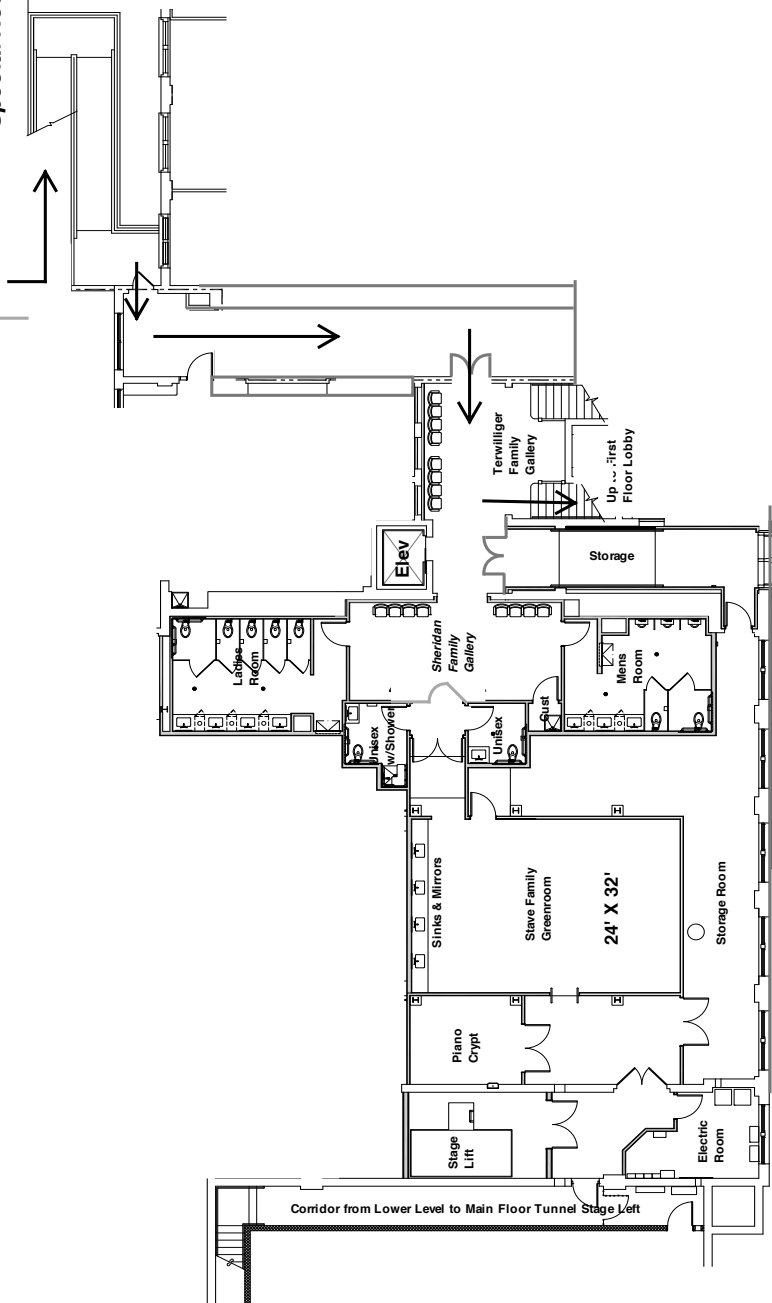
The Gallery features a 7' Ivers and Pond Grand Piano. Additional charge applies for tuning.

Appendix A
Venue Floor Plans and Plots

North Rear Parking Lot

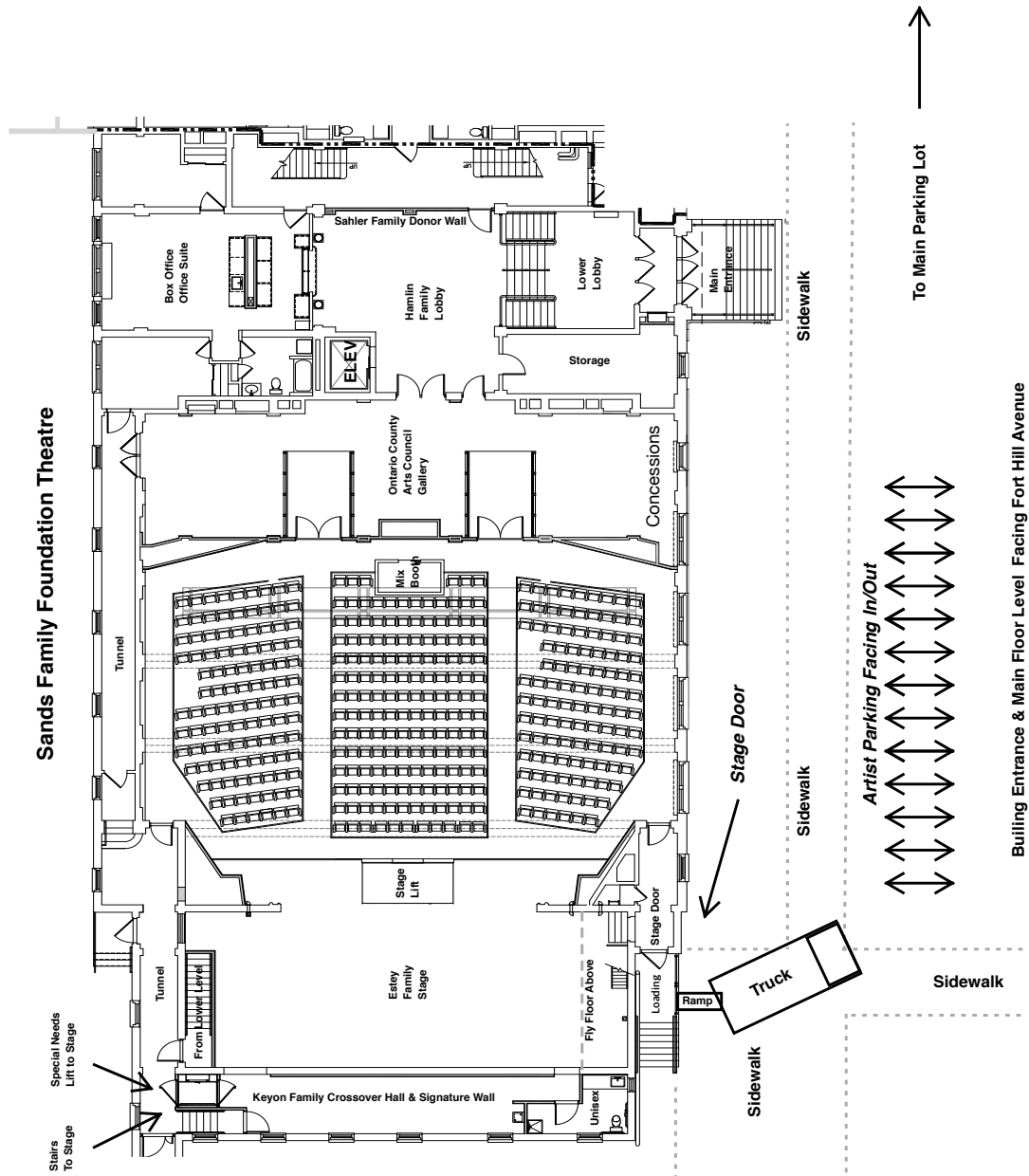
Special Needs Entrance

Lower Level Greenroom



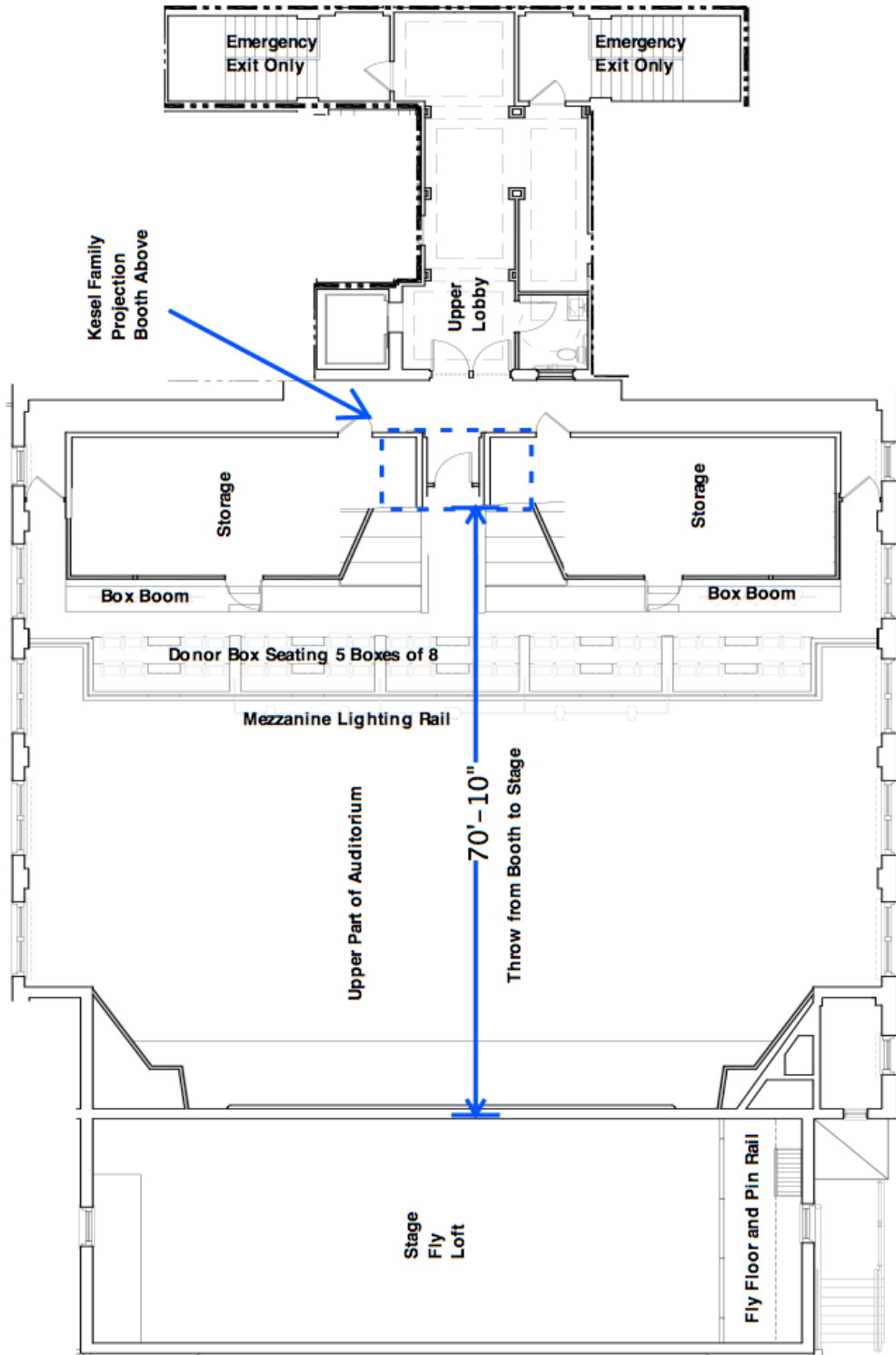
Lower Level Floor Plan
Fort Hill Avenue Building Front

Main First Floor Level



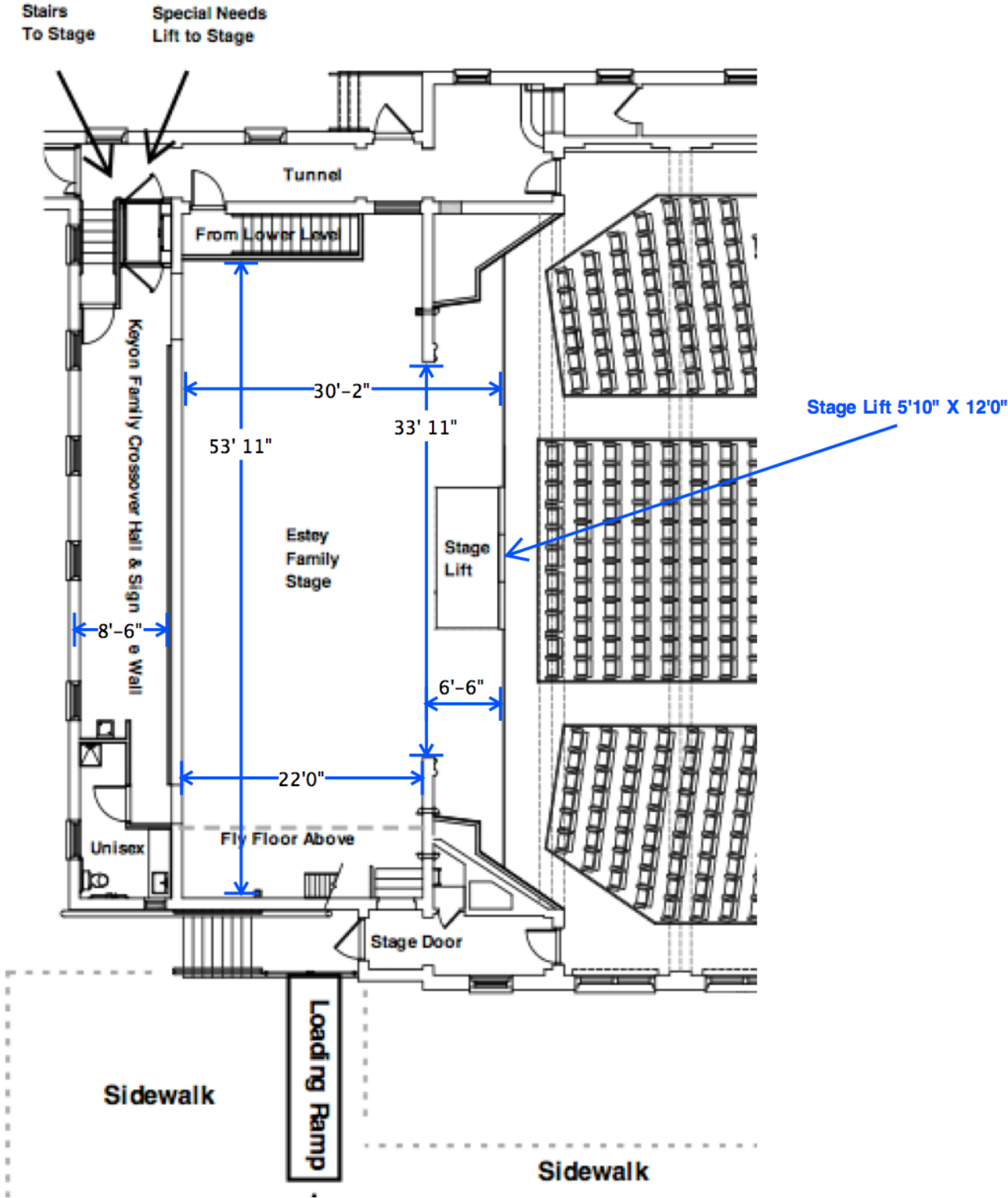
Second Floor Mezzanine

Maximum Occupancy 44



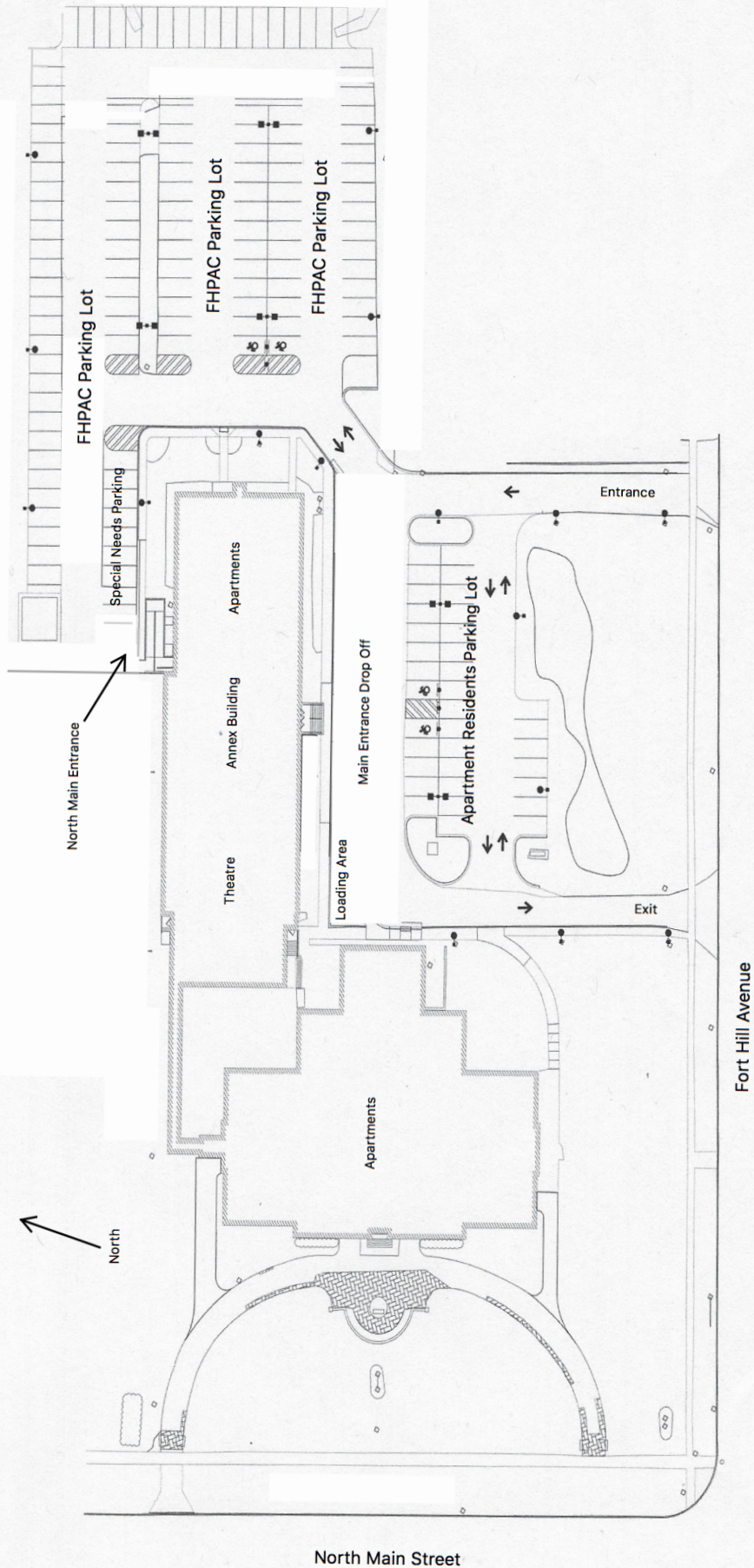
Mezzanine Second Floor Level Facing Fort Hill Avenue

Stage Maximum Occupancy 106

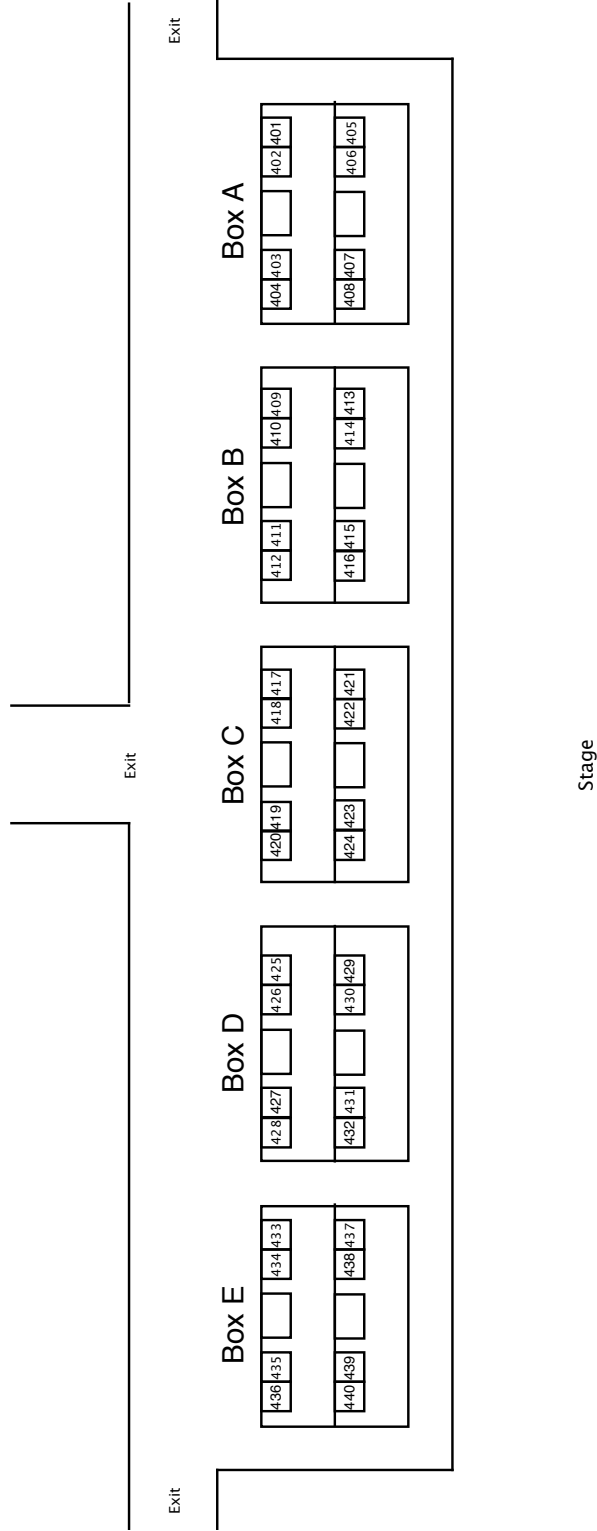


Stage Dimensions

Site Plan



Mezzanine Maximum Occupancy 44



Fort Hill Performing Arts Center Canandaigua, Inc.

Sands Family Foundation Theatre

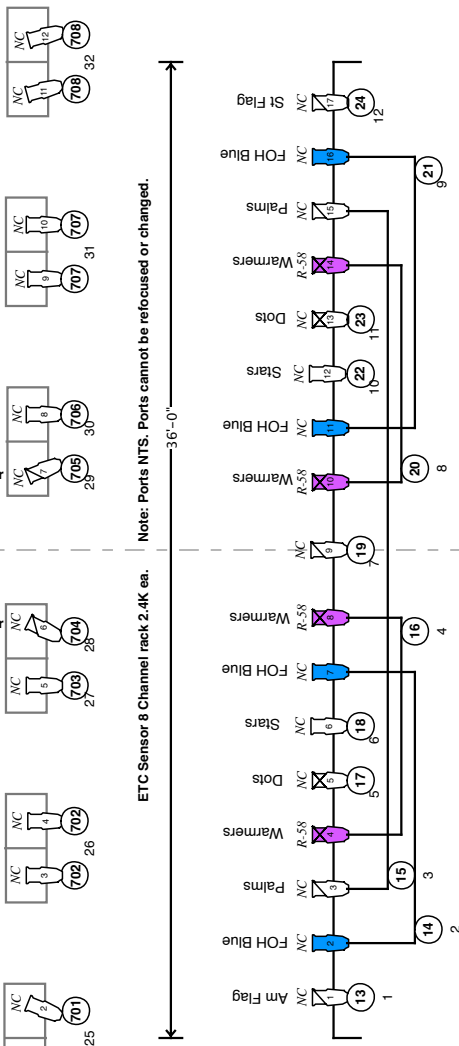
Total Orchestra Seating 387
 Mezzanine 40
 Total Seating 427

Stage Lighting Plots

SL

Stage

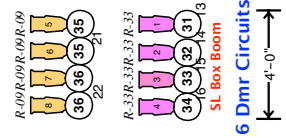
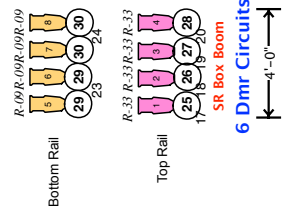
SR



FOH Cove
8 Dmr Circuits
DMX Universe 2

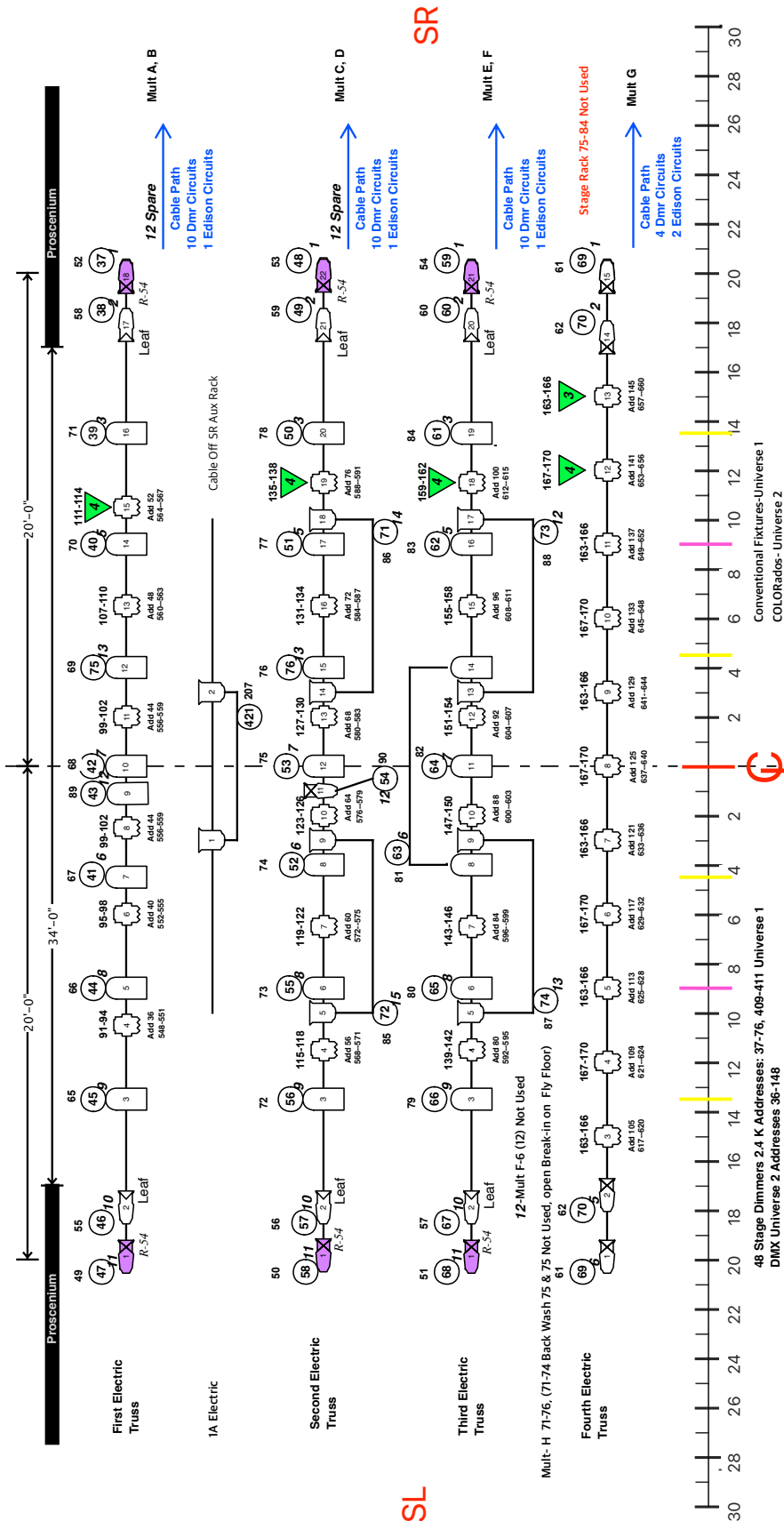
Mezzanine Rail
12 Dmr Circuits
Universe 1

6 Dmr Circuits
 4'-0"



ETC Sensor 8 Channel rack 2.4K ea. 36'-0"

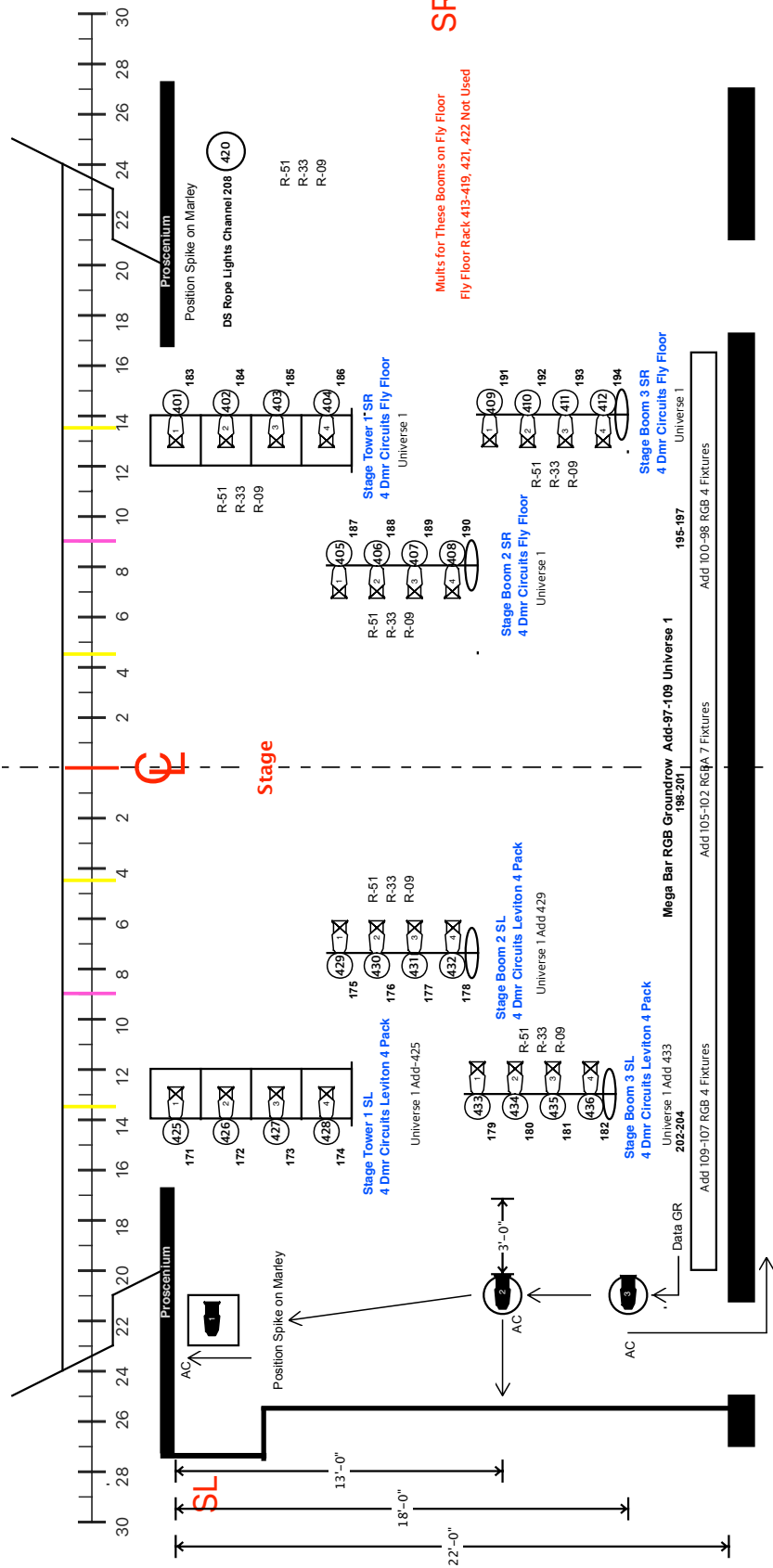
FORT HILL PERFORMING ARTS CENTER FOH Electrics Plan View		Rev. May 17, 2023 Scale 1/4"=10"	Page 1 of 3 1
FHPAC is Serviced by: Gordon J. Estey, LD gestay@rochester.rr.com 585-752-3494		Drawn by GJE Rep Plot	
Fixture Key 36 Degree S-4 Leko--- 26 Degree S-4 Leko--- 19 Degree S-4 Leko--- 19 Degree Color Source Leko--- 4 Channel Mode 10 Degree S-4 Leko--- COLORado RGB- Dimmer--- Channel----#			



<p>FORT HILL PERFORMING ARTS CENTER Stage Electrics Plan View</p>		<p>April 5, 2023</p> <p>Scale 1/4"=10"</p>
<p>FHPAC is Serviced by:</p> <p>Gordon J. Estey, LD gestey@rochester.rr.com 585-752-3494</p>		<p>Page 2 of 3</p>
<p>Rep Plot</p> <p>Drawn by GJE</p>		<p>2</p>

Fixture Key

- 36 Degree S-4 Leko
- 26 Degree S-4 Leko
- 19 Degree S-4 Leko
- 36 Degree Color Source Leko
- COLORado RGB
- 1 Tri-Tour Mode ARD 1-4 Chan
- Dimmer--- Channel---#



SR

Mults for These Booms on Fly Floor
Fly Floor Rack 413-419, 421, 422 Not Used

<p>FHPAC is Serviced by: FHPAC FORT HILL PERFORMING ARTS CENTER Stage Booms Plan View</p>		<p>April 5, 2023</p> <p>Page 3 of 3</p> <p>Scale 1/4"=10"</p> <p>3</p>
<p>Gordon J. Estey, LD gestey@rochester.rr.com 585-752-3494</p>		<p>Rep Booms</p>
<p>Drawn by GJE</p>		<p>36 Degree S-4 Leko--- 26 Degree S-4 Leko--- 19 Degree S-4 Leko--- 36 Degree Color Source Leko---</p> <p>1 Tri-Tour Mode ARD 1-4 Chan</p> <p>Dimmer--- Channel---#</p>

Venue Photos



Loading Dock



Loading Dock



Interior House view towards Stage Door



Stage Door & SR Stage Access

Venue Photos



FOH View



FOH View



Stage Left View to Right



US Crossover Hall View to SR



Lower Level Greenroom